

EirGrid Monthly Electricity Statistics Update – October 2009

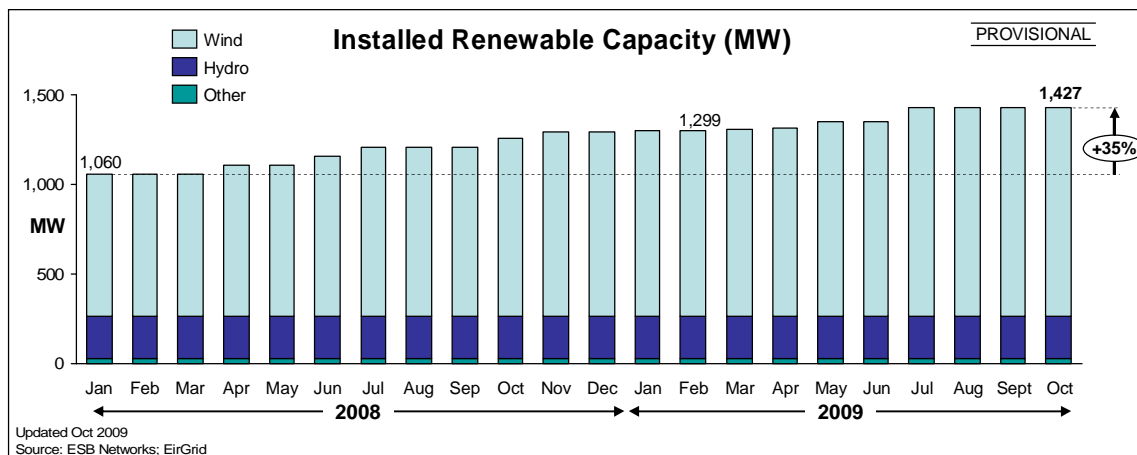
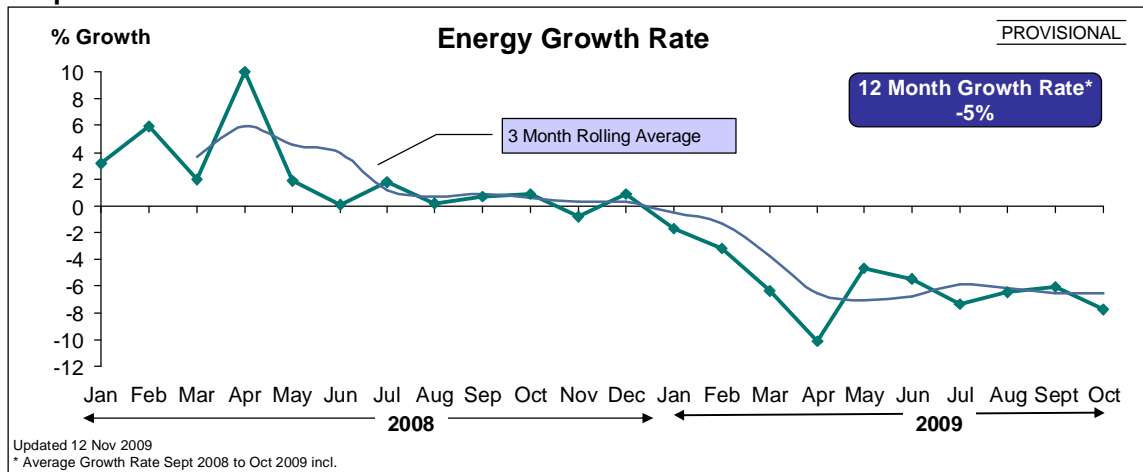
Key Points:

- Electricity demand growth continued to decline with October 2009 down 7.5% on the same month last year and year to date demand down 5.9% on the same period last year

System Statistics and Records:

Monthly electricity demand ¹	2.22 TWhr	October 2009
Monthly electricity demand growth rate ¹	- 7.5%	October 2009 v October 2008
Maximum (Winter evening peak) load all time	4,906 MW	17:45hrs on Tuesday 18 December 2007
2009 – Maximum load	4,890 MW	17:45hrs on Wednesday 07 January 2009
2009 – Minimum load	1,632 MW	06:00hrs on Sunday 02 August 2009
Installed Dispatchable Capacity ²	6,317 MW	As at 30 September 2009
Installed Renewable Capacity ³	1426 MW ⁴	As at 31 October 2009
Maximum Wind Output	1064 MW	13:52hrs on Saturday 24 October 2009

Graphs:



Please note: This report provides an update on some of the key statistics related to the electricity transmission system and electricity usage patterns. The information presented here is the best available at this time, nevertheless, to ensure timely of publication of the data, we have in some cases used preliminary data which we will update as better information becomes available in the future.

If you need further information on these statistics, please email info@eirgrid.com or go to www.eirgrid.com

1 Preliminary data

2 Includes conventional thermal, large hydro and pumped storage

3 Includes wind, large & small scale hydro and other (e.g. biomass and landfill gas). Based on installed capacity (distribution & transmission)

4 September 2009 report contained an error stating the installed renewables as 1,437MW. This should have been 1,427MW.

While every effort has been made in the compilation of this report to ensure that the information contained herein is correct we cannot accept any responsibility or liability whatsoever for any damage howsoever caused by reliance on the information presented here