

# SEM Operations Review

**Liam Ryan**

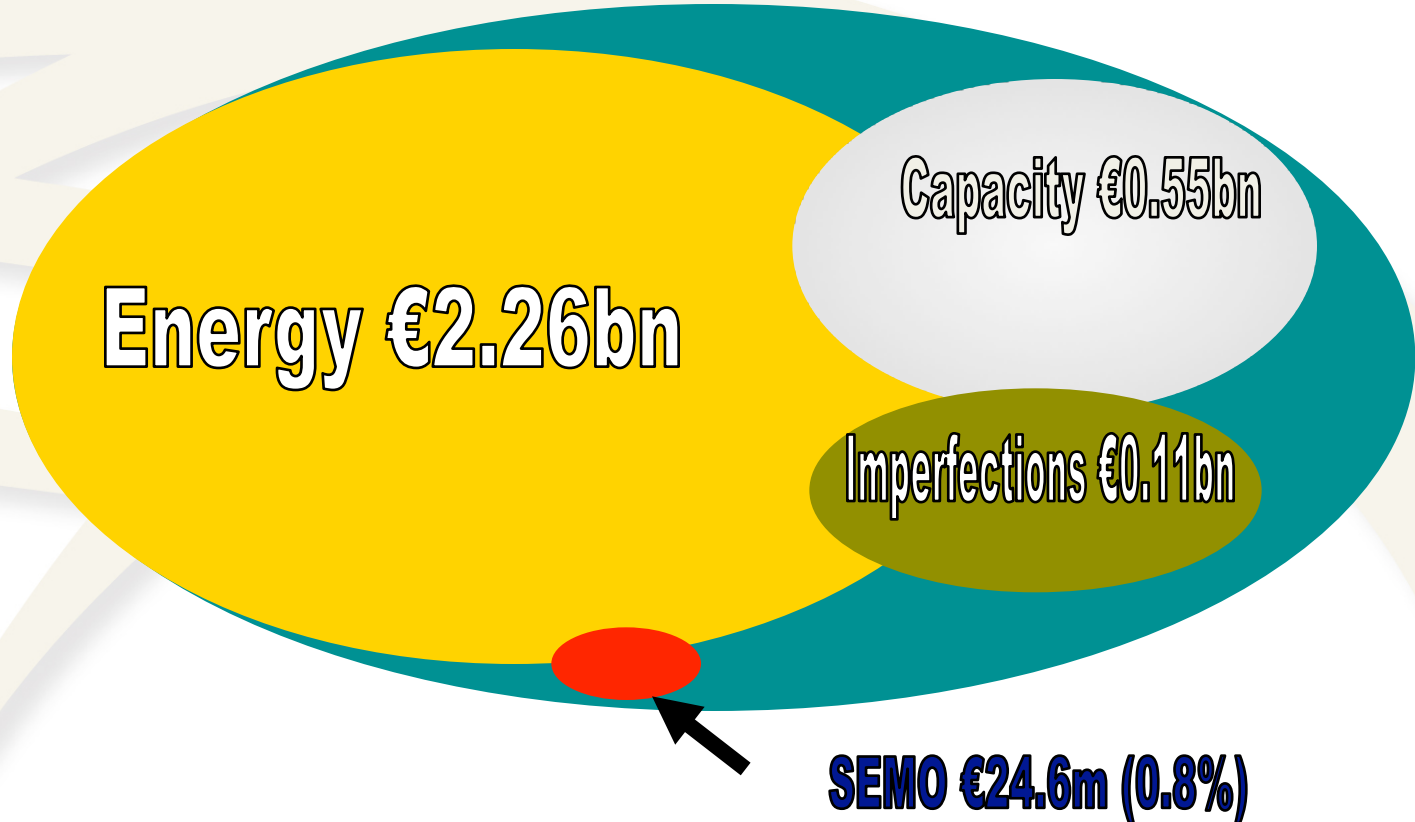
**EirGrid Group Customer Conference**

**20<sup>th</sup> October 2011**

# Agenda

- Overview of SEM
- SEMO Performance
- Market Analysis
- Conclusions

# Wholesale Market €2.95bn



# Participants in the SEM

- **Registered Capacity in the Market: 11,279 MW**
  - Thermal plant 9139 MW
  - Wind 612 MW
  - Pumped Storage 292 MW
  - Hydro 222 MW
  - Biomass 14 MW
- **63 Participants have registered in SEM**
  - 10 new Participants have joined the SEM in 2010
  - 4 new Participants have joined in 2011
- **18 Participants are registering Units**

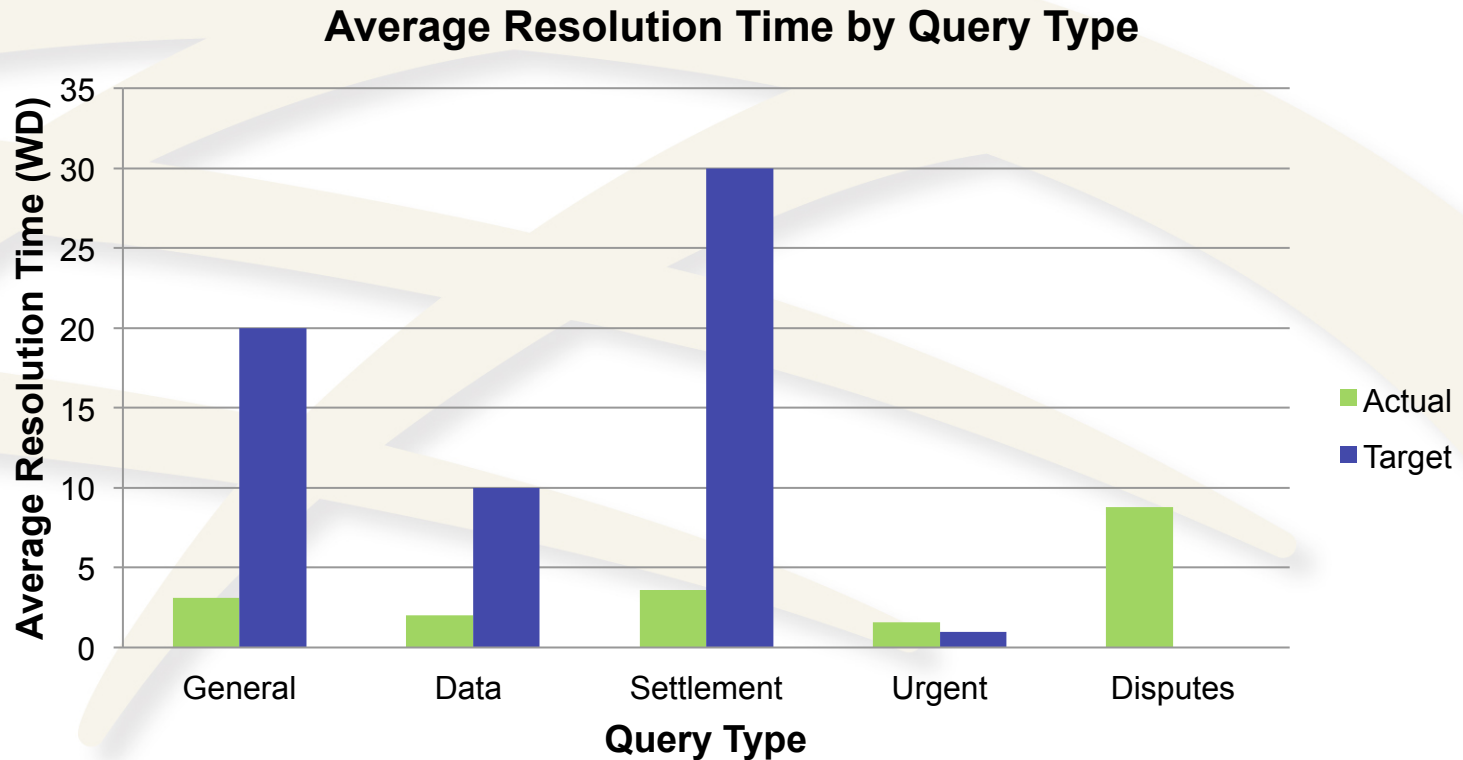
# Key Performance Indicators

		Oct-Dec	Jan-Mar	Apr-June	Jul-Sept	YTD
Metric	Target	Q1	Q2	Q3	Q4	2010-2011
Ex-Ante Pricing	99%	100%	100%	100%	98%	99.45%
Ex-Post Initial Pricing	99%	100%	100%	99%	99%	99.45%
Invoicing	95%	100%	97.65%	100%	97%	98.63%
SEMO Resettlement	15	1	6	8	1	16
Credit Cover Increase Notices	99%	100%	100%	100%	100%	100%
Customer Service	97%	97.50%	100%	99%	99.1%	99%

# Key Issues

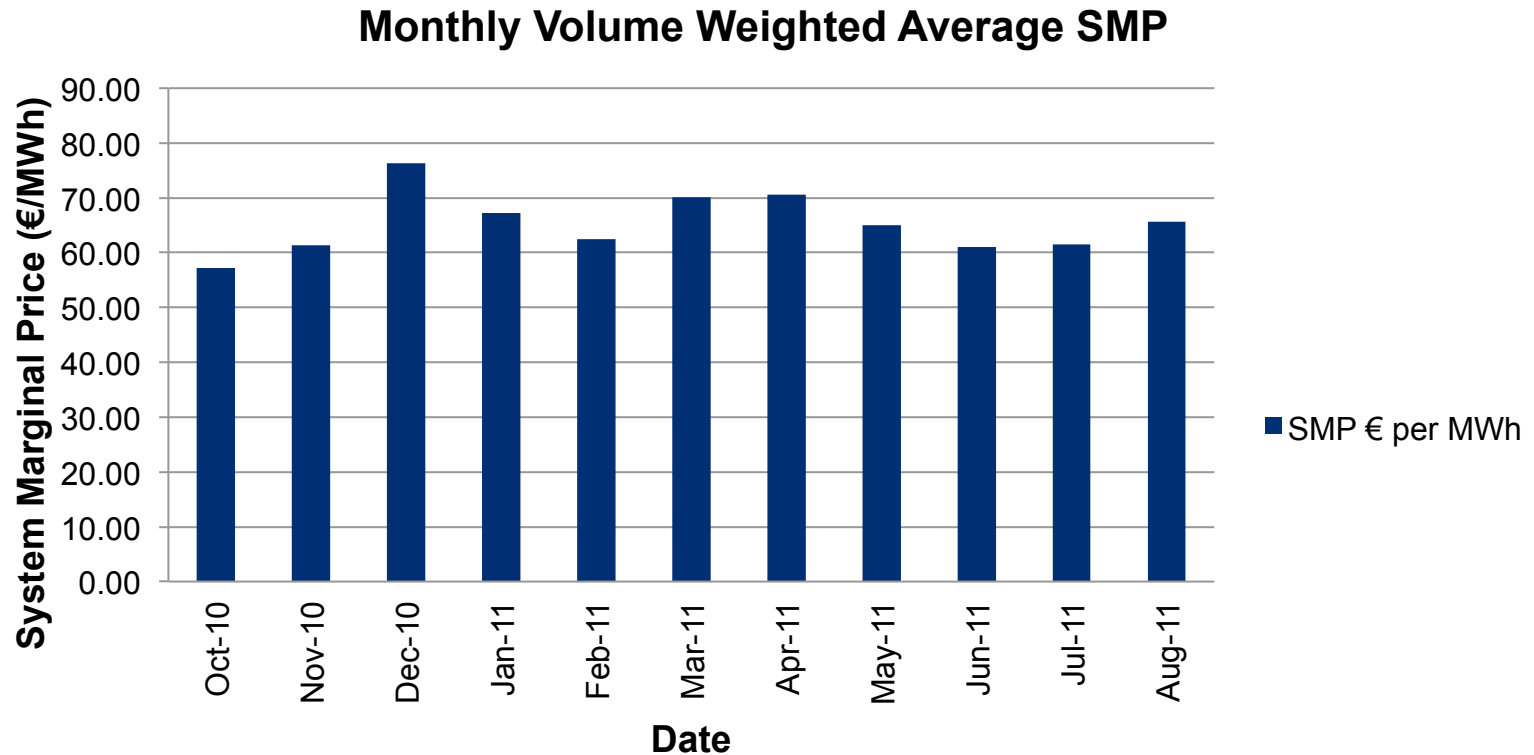
Issue	Resolution	Status
Database corruption	Upgrade to Oracle ASM	Closed
Operational Errors (3)	Retraining of Staff	Closed
Submitting COD and retrieving reports	Customer Issue	Closed
Publication of Reports delayed	Upgrades to MI – FTP	Closed
Intermittent Market Interface	Links between Dublin and Belfast Upgraded	Closed

# Customer Queries

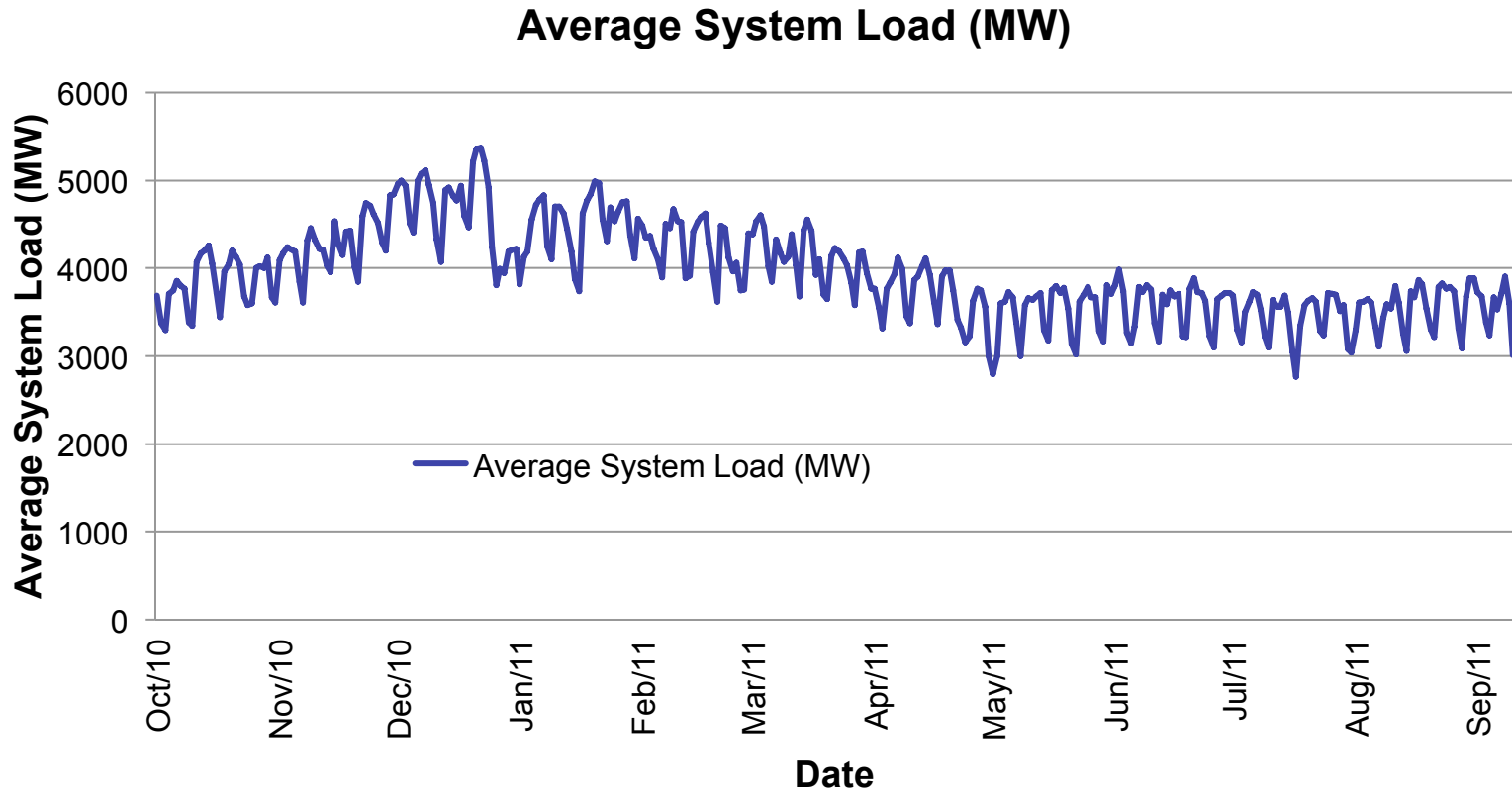


3389 Queries received

# Market Analysis 1 of 8

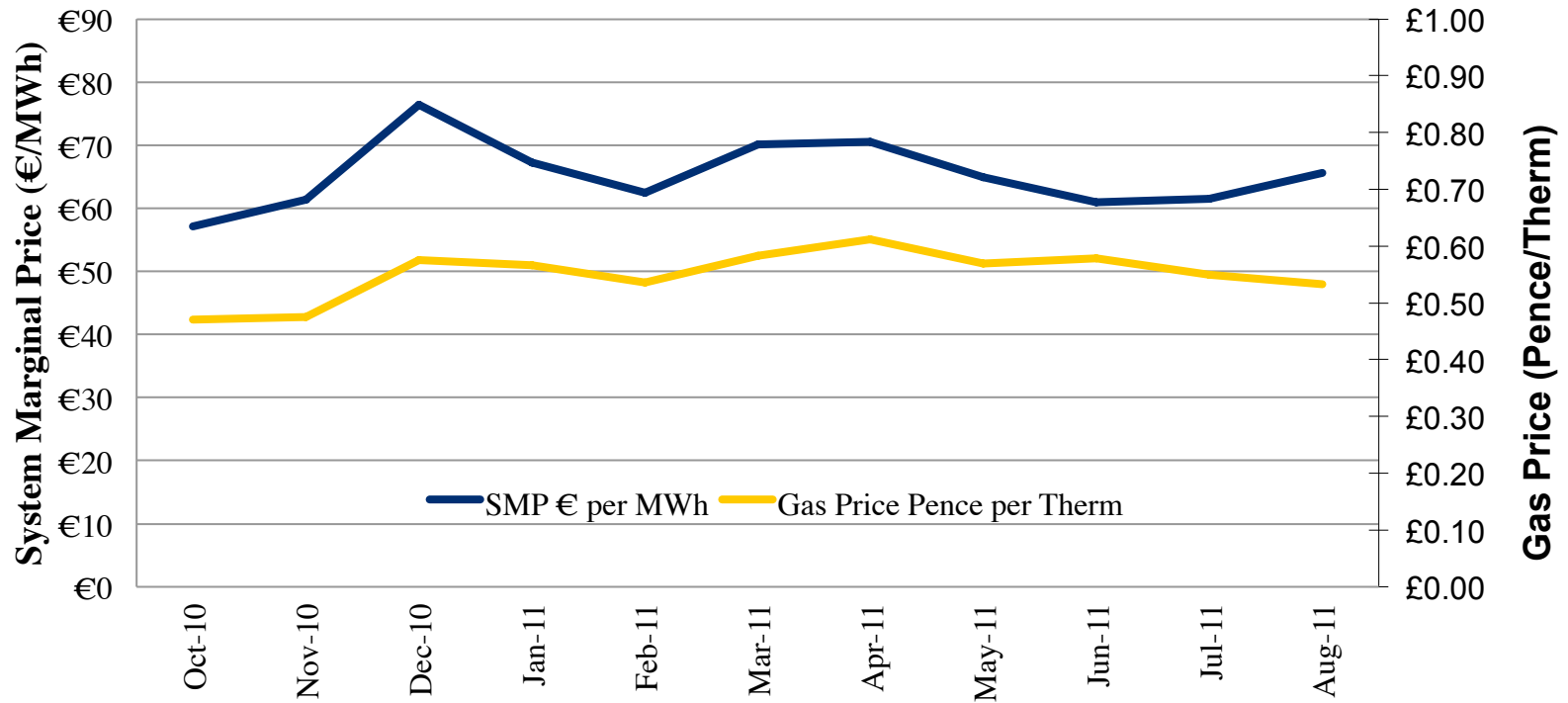


# Market Analysis 2 of 8



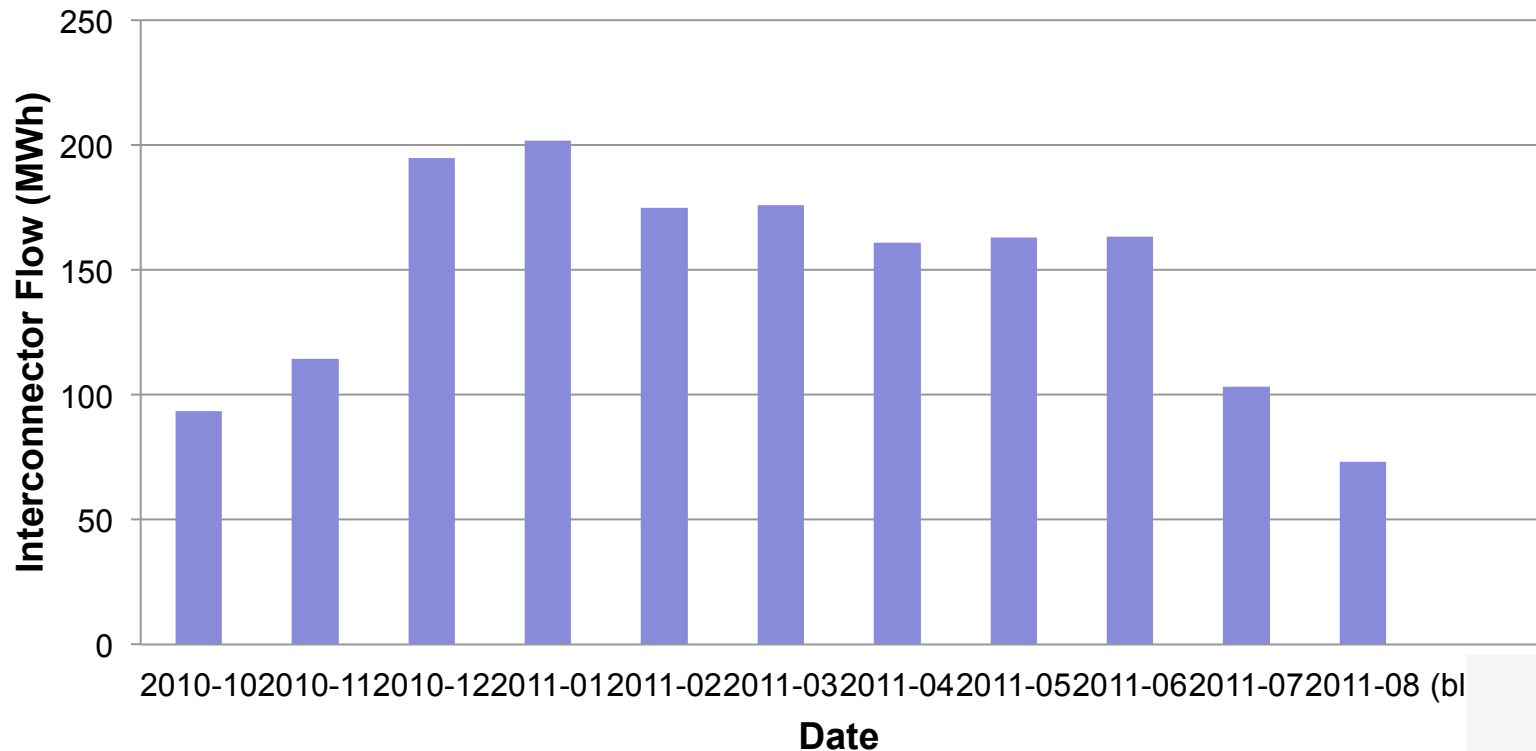
# Market Analysis 3 of 8

## Average SMP vs Average Gas Price



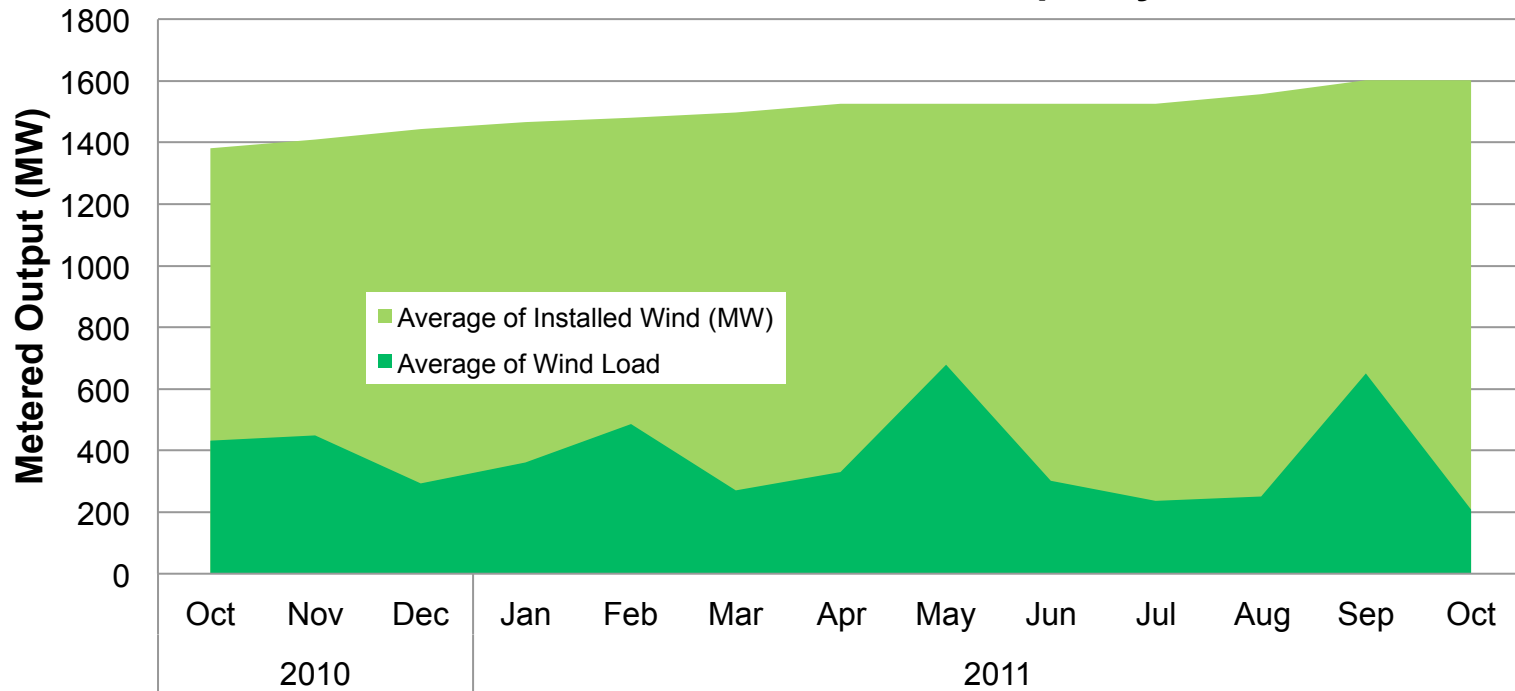
# Market Analysis 4 of 8

## Monthly Average Interconnector Flow



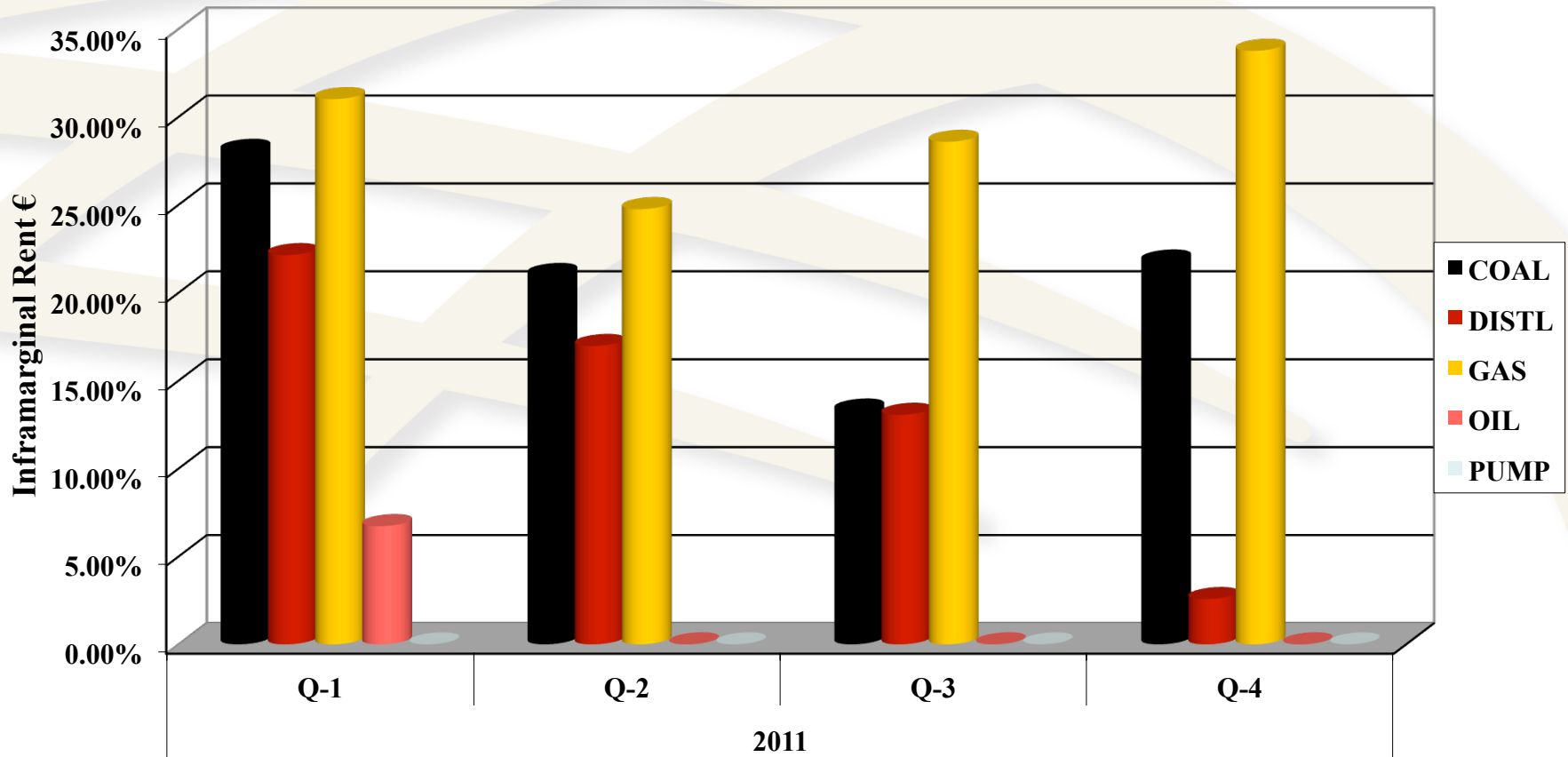
# Market Analysis 5 of 8

## Metered Wind and Installed Capacity



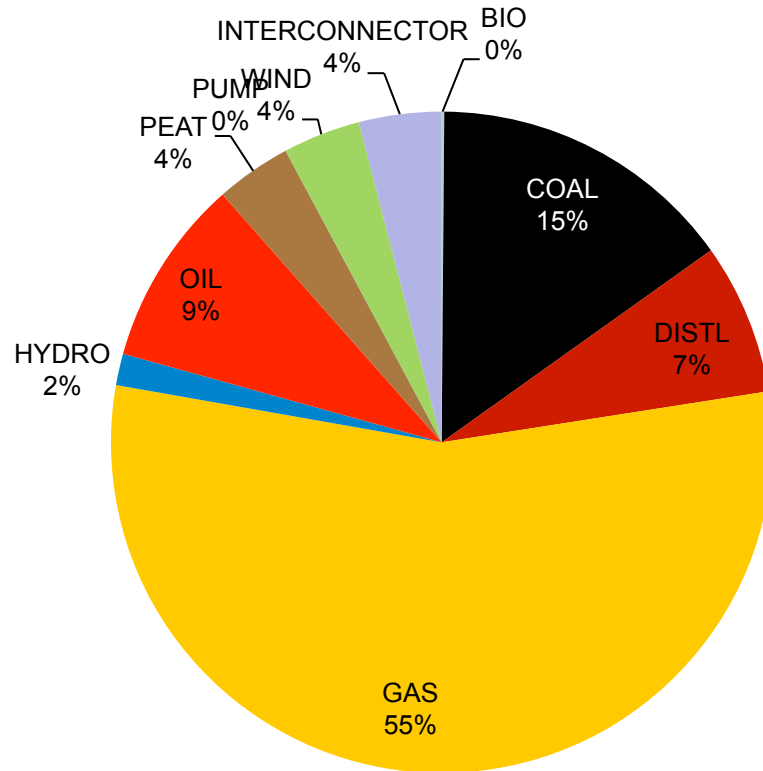
# Market Analysis 6 of 8

## Inframarginal Rent for Price Maker Generator Units by Fuel Type



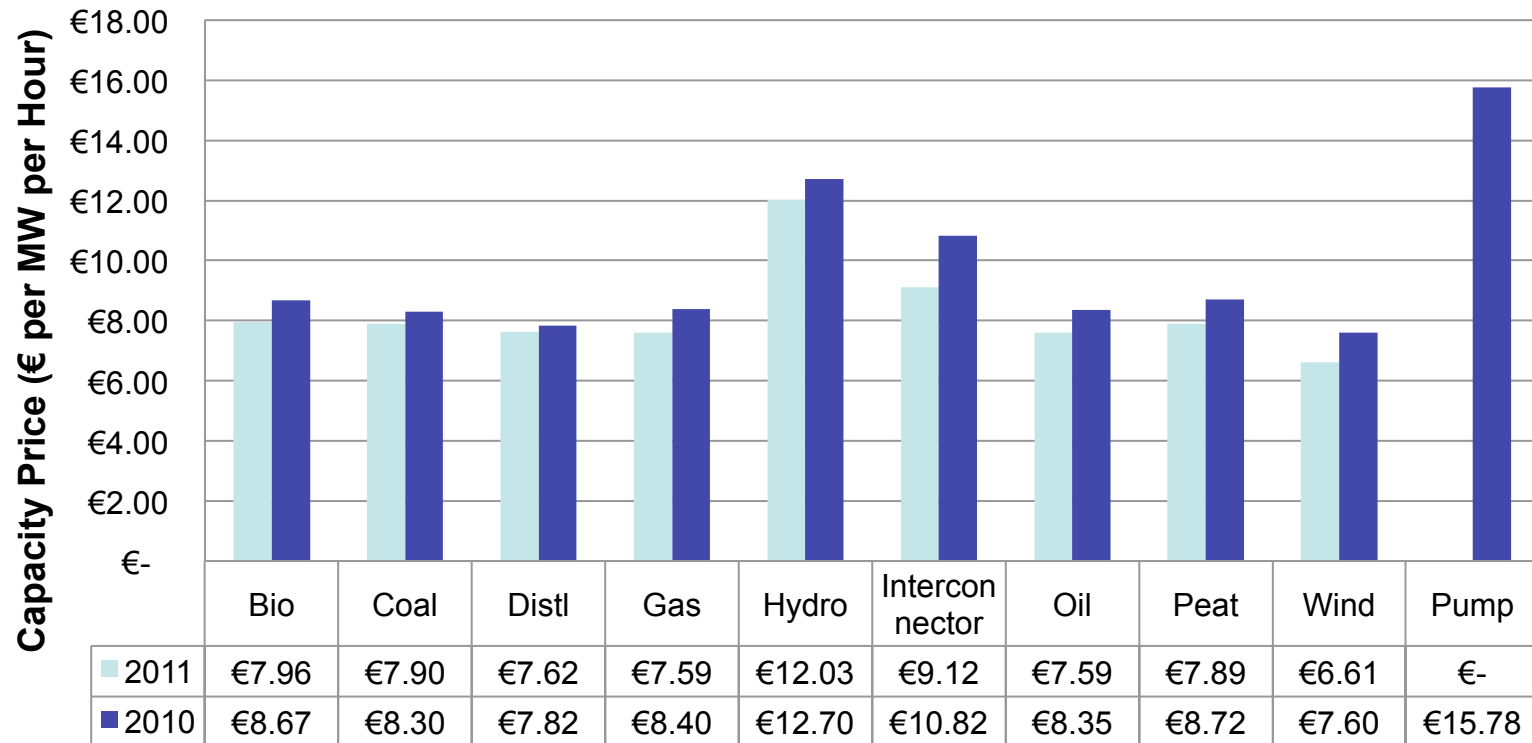
# Market Analysis 7 of 8

## Capacity Payments by Fuel Type



# Market Analysis 8 of 8

## Average Capacity Price by Type in SEM



# Conclusions

- Improvement in operational performance
- Reduction in Customer query response times
- SEM continuing to provide investment signals
  - % Inframarginal Rent to production cost favourable
  - Capacity Payments averaging approximately €8 per MW per hour
- SMP Impacted by, Demand, Interconnector flow, Wind and Gas Price

# Thank You

For further details on the Single Electricity Market please  
see:

[www.sem-o.com](http://www.sem-o.com)