



Commission for Energy Regulation

An Coimisiún um Rialáil Fuinnimh

# EirGrid Customer Conference

## Single Electricity Market Review

Garrett Blaney,  
Commissioner

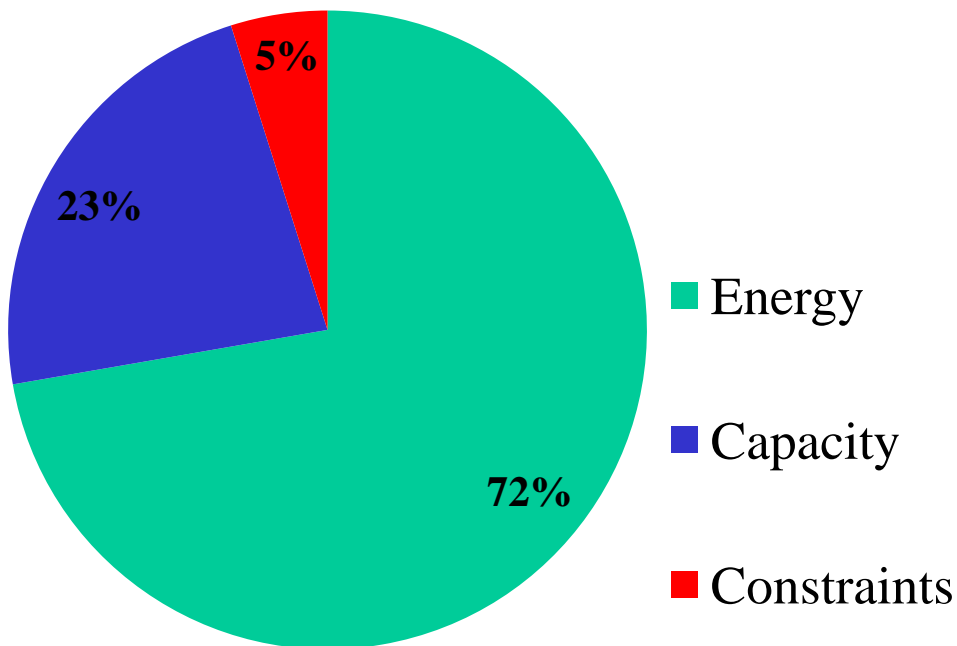
Commission for Energy Regulation  
3 November 2010

# Structure

- SEM Progress
- SEM Key Events
- SEM Next Steps
- SEM Future Challenges

## SEM Revenue (1)

### 2009/2010 Tariff Year



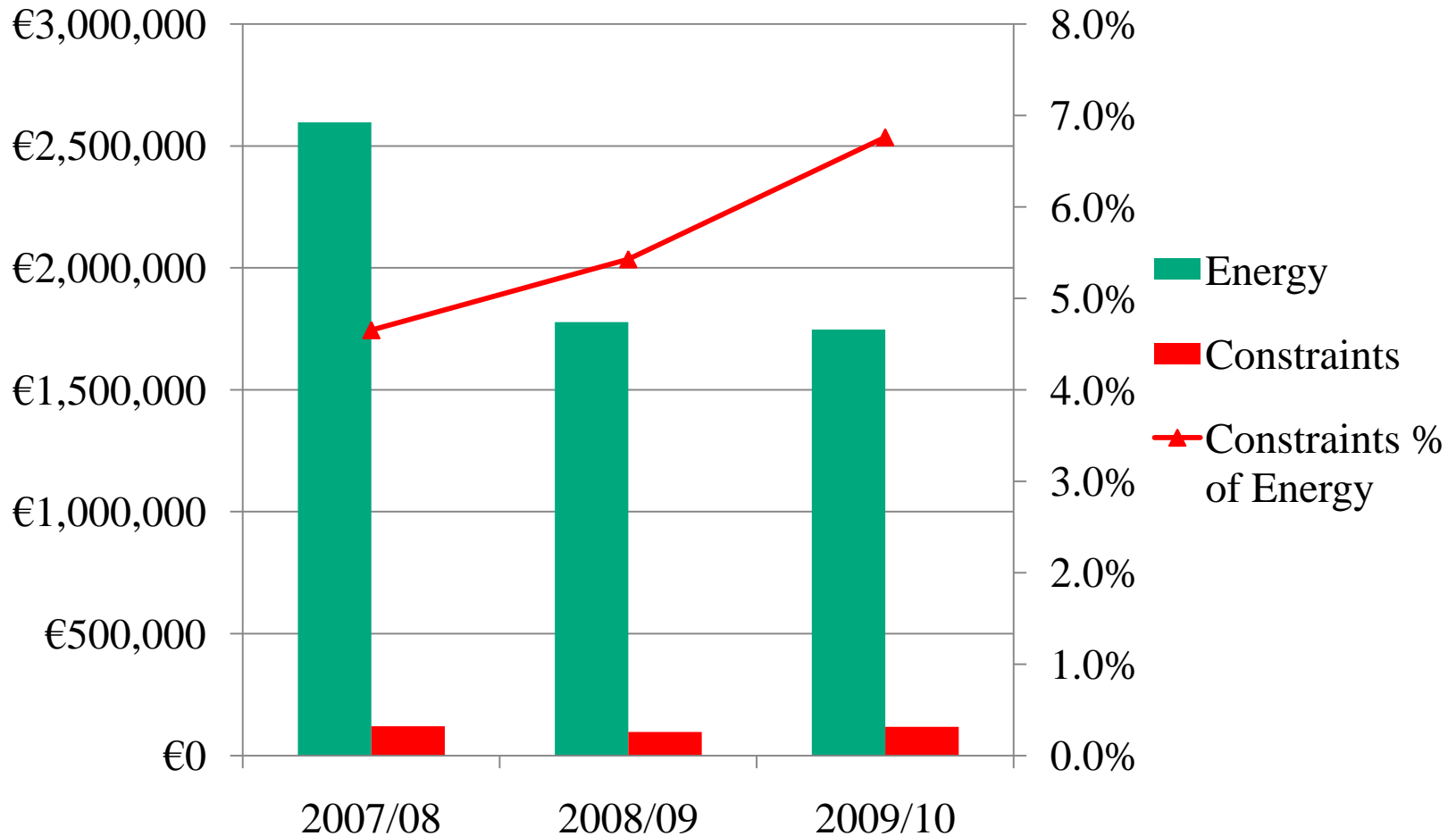
- Pool: € 1.7 billion

- Constraints: €120 million

- Capacity: €550m

## SEM Revenue (2)

**Euro, million**

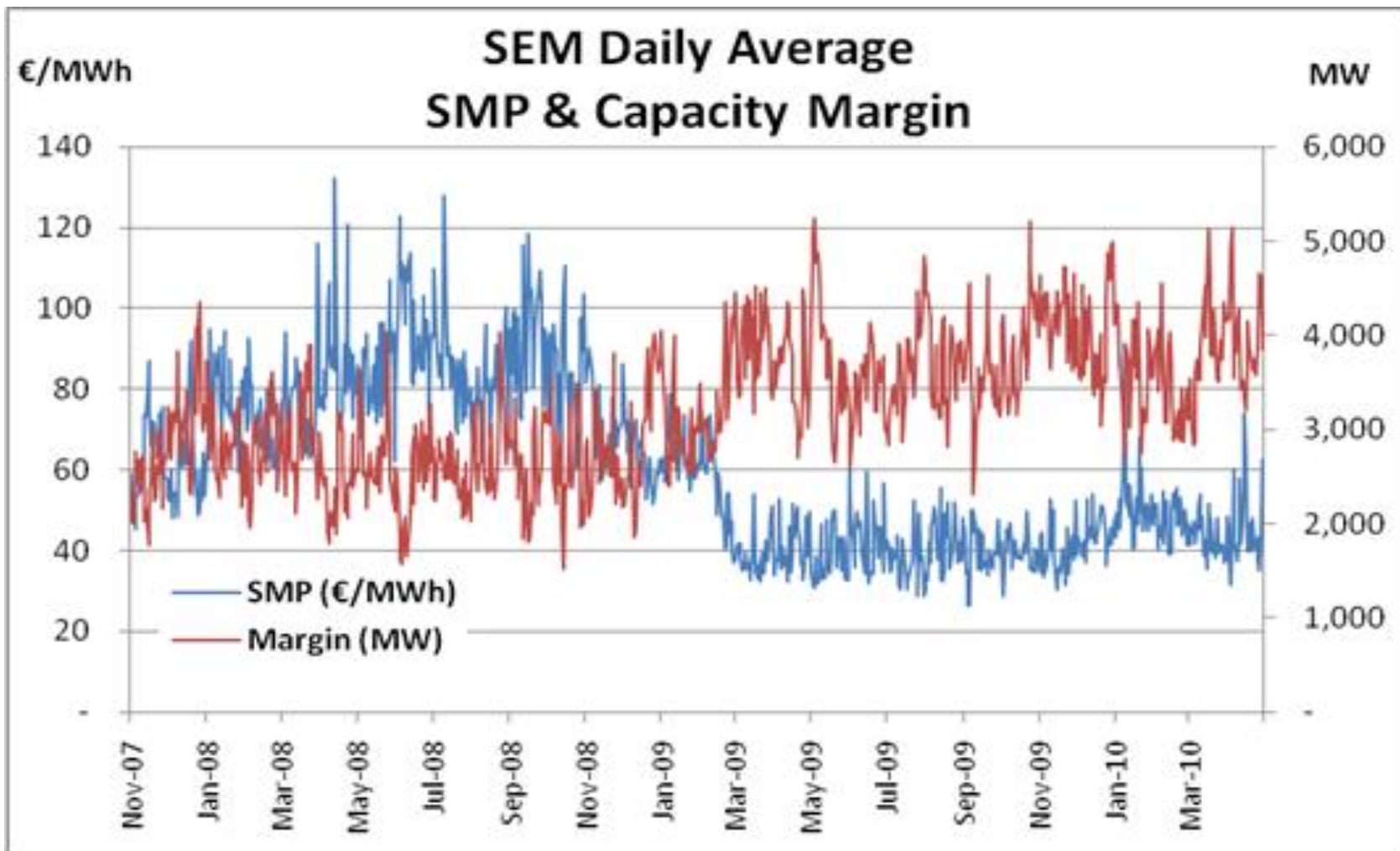


# SEM Progress (1)

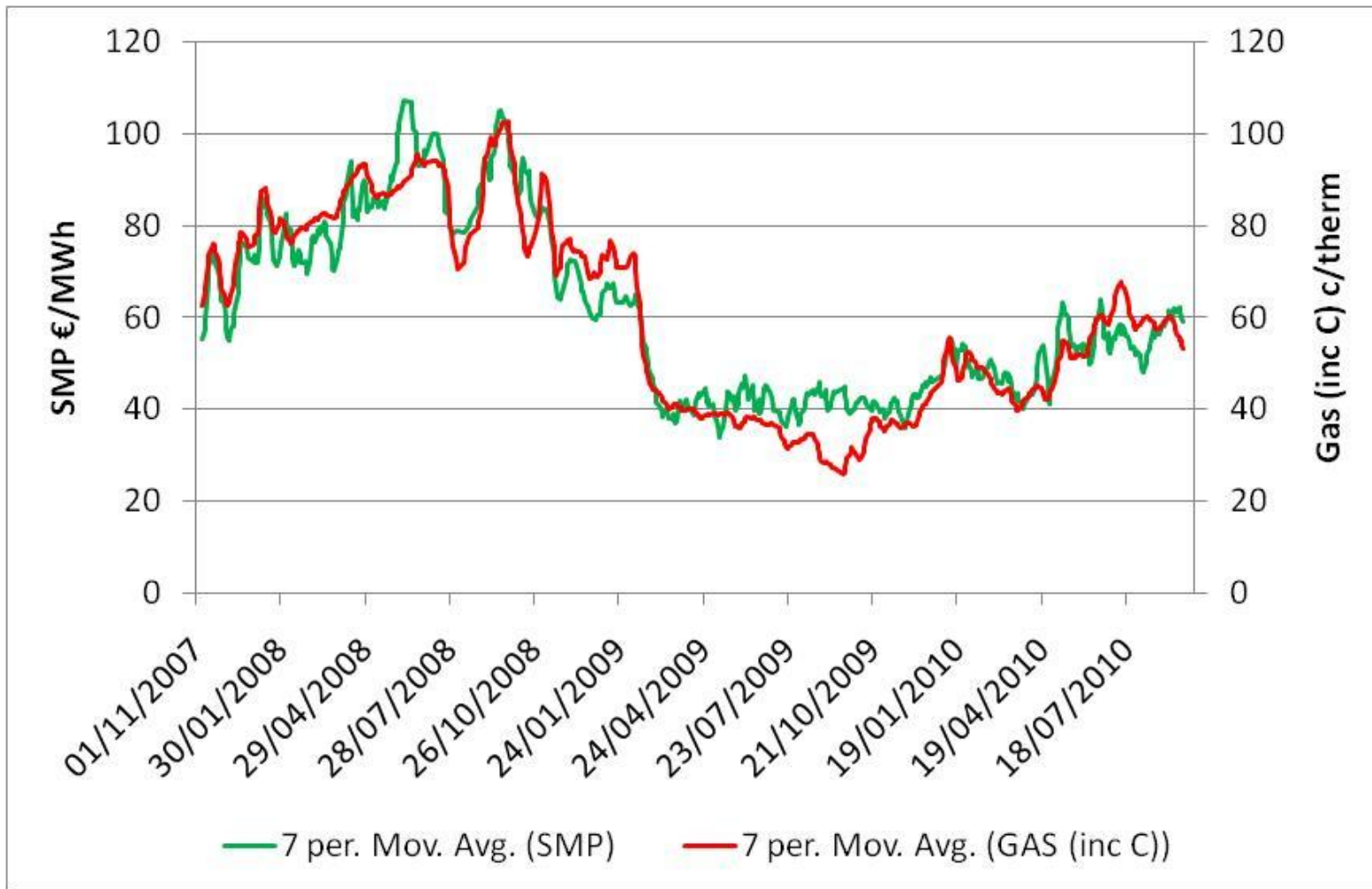
Plant Retired	Capacity	New Plant	Capacity
Poolbeg 1	110MW	Huntstown 2	401MW
Poolbeg 2	110MW	Kilroot Peakers	80MW
Poolbeg 3	242MW	Aghada CCGT	432MW
		Cushaling OCGT	116MW
		Whitegate CCGT	445MW
		Total Conventional	1,474MW
		Renewables	~500MW
<b>Total</b>	<b>462MW</b>	<b>Total</b>	<b>~2000MW</b>

**Plus CER has also recently issued an Authorisation to Construct to Endesa Ireland for a 431MW CCGT at Great Island to replace the existing oil plant**

## SEM Progress (2)

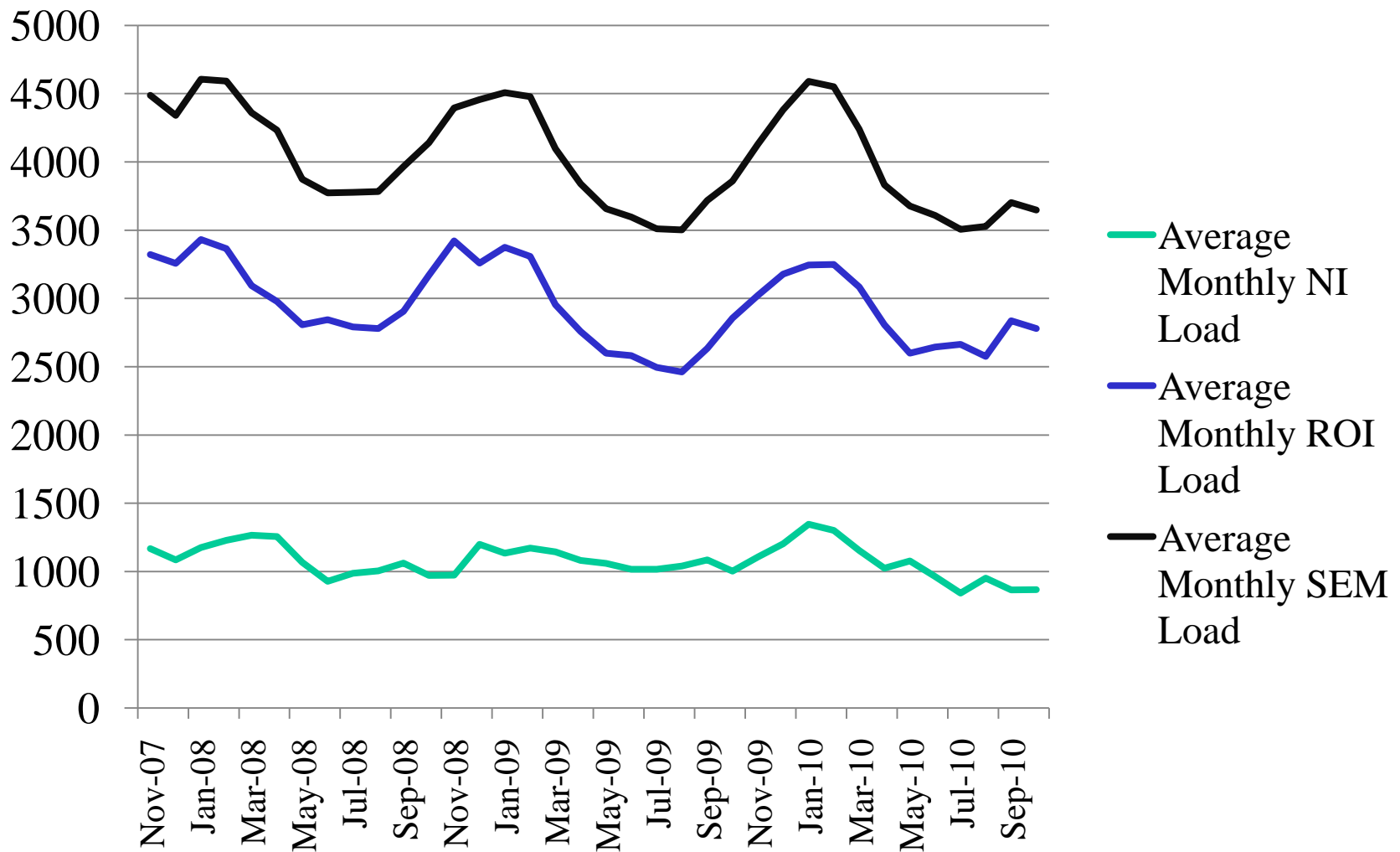


## SEM Progress (3)



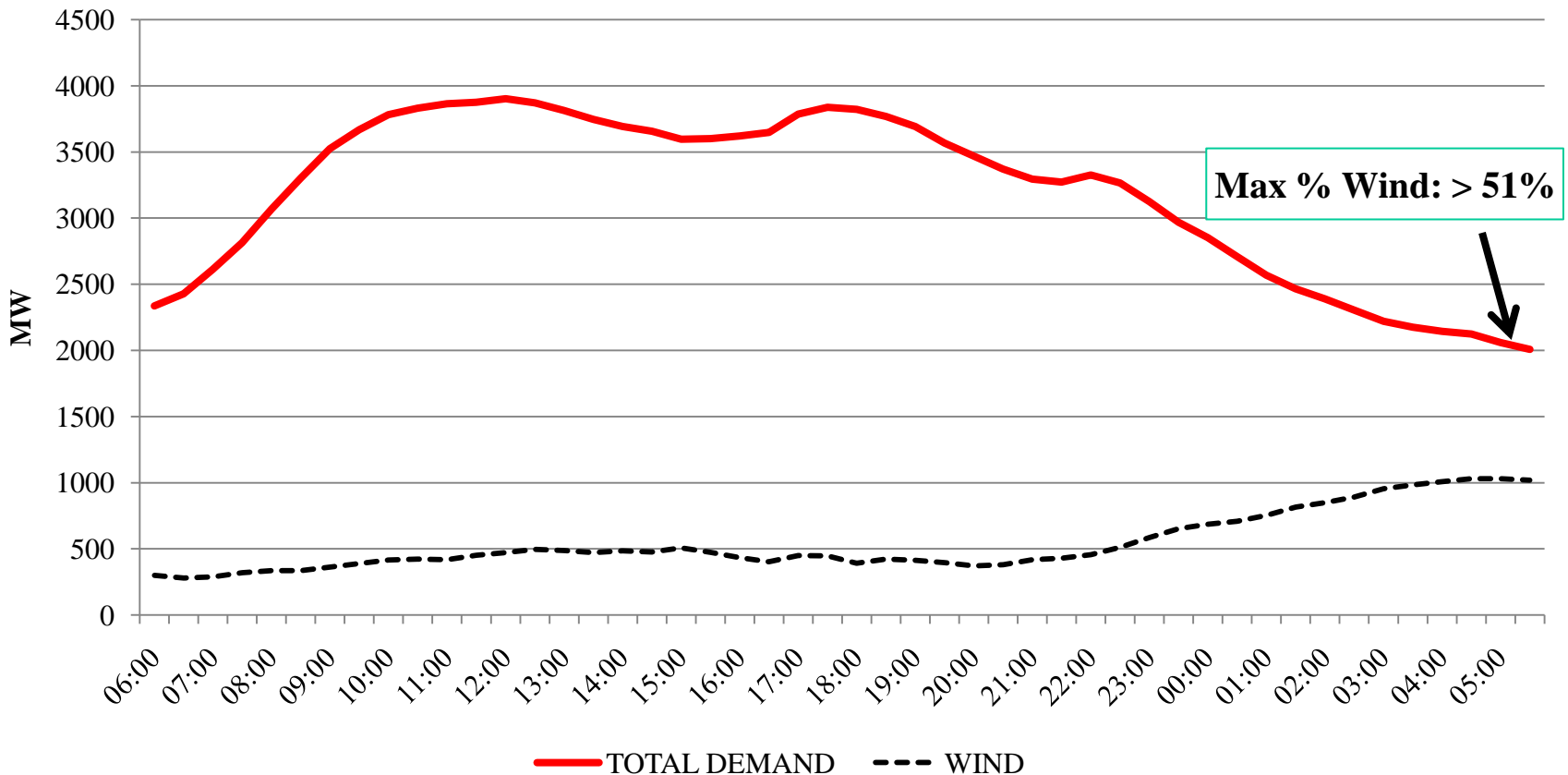
# SEM Key Events (1)

MW

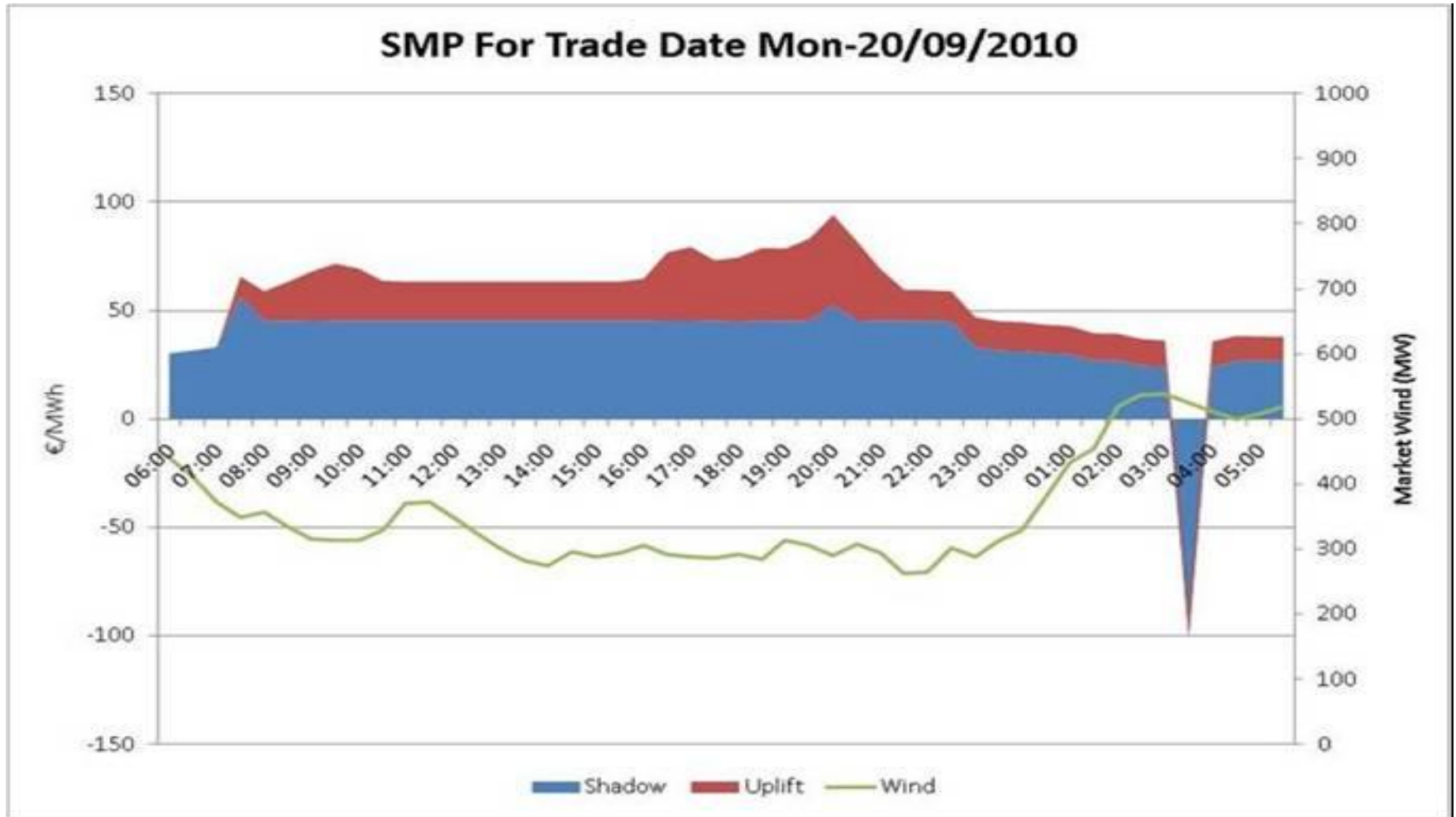


## SEM Key Events (2) - Maximum Wind

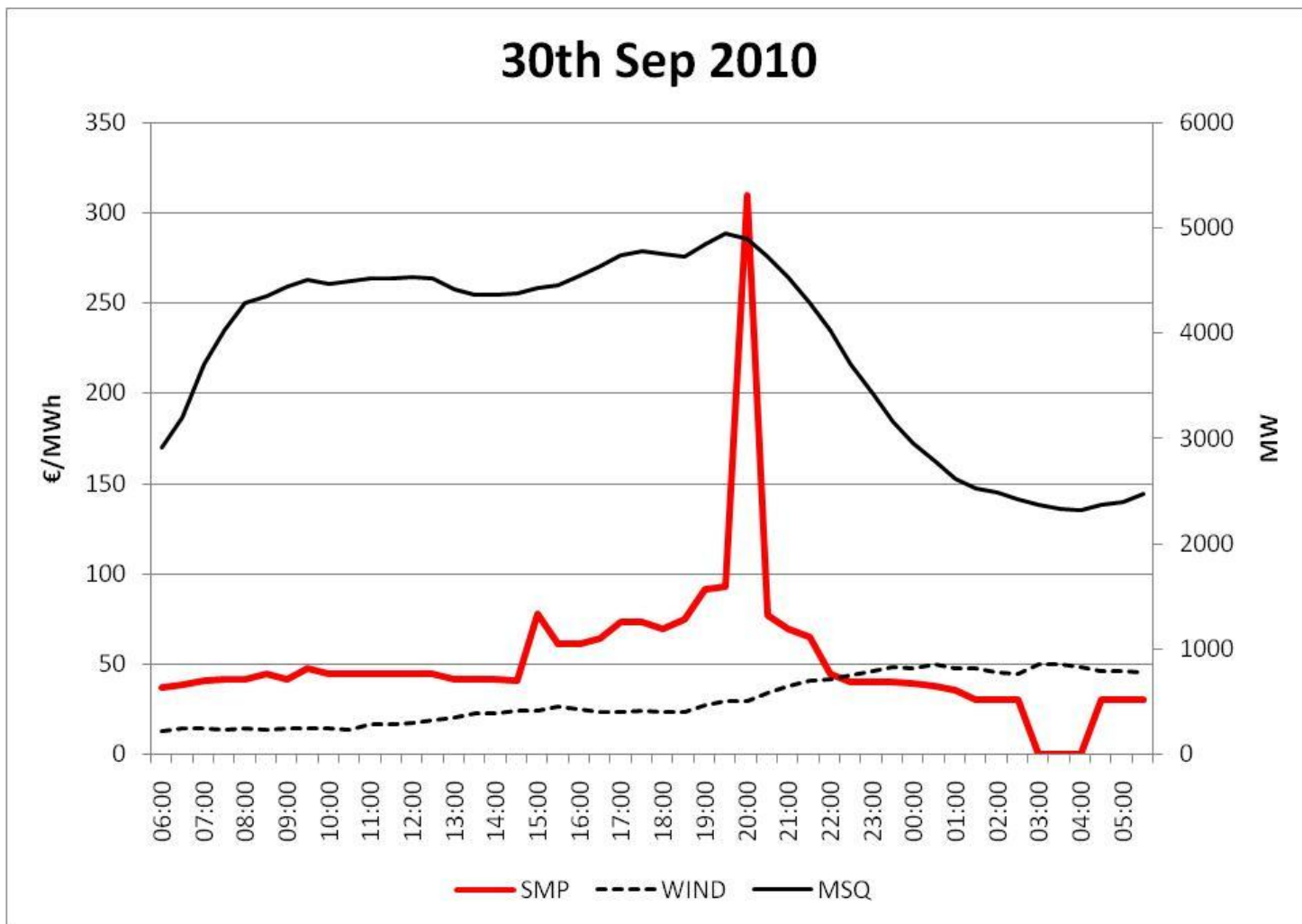
3rd July 2010



## SEM Key Events (3)



# SEM Key Events (4) - Volatility



# SEM Next Steps

- CPM Review
- Liquidity and Market Power Review
- TLAf enduring solution
- Interconnector Trading
- Ancillary Services
- Gate Closure

# SEM Future Challenges

- Facilitating 40% Renewables Target
- Regional Integration
- Further Interconnection to where?